



# All Lab, Allergy and Bone Density Clinics

are conducted at the following Bashas' locations...

## June 2010 Schedule

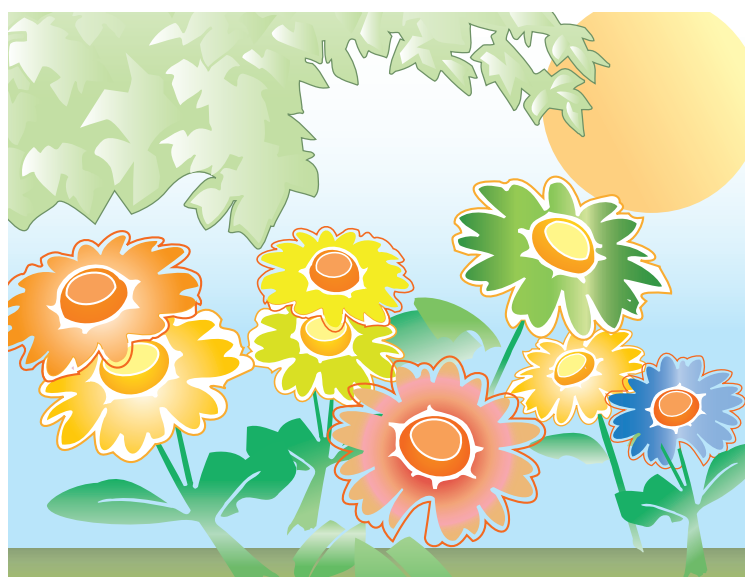
16	Wed	Thorneydale & Cortero	TUCSON
17	Thu	Scottsdale & Grayhawk	SCOTTSDALE
18	Fri	Coffee Pot & Yavapai	SEDONA
23	Wed	Maricopa & Oro Grande	LAKE HAVASU CITY
24	Thu	Armour & Andy Divine	KINGMAN
25	Fri	Brown & Higley	MESA
30	Wed	16th St. & Glendale	PHOENIX

## July 2010 Schedule

1	Thu	Apache Trail & Signal Butte	APACHE JUNCTION
2	Fri	Hayden & Indian School	SCOTTSDALE
7	Wed	RH Johnson & Meeker	SUN CITY WEST
8	Thu	Warner & McClintock	TEMPE
9	Fri	7th St. & Union Hills	PHOENIX
14	Wed	Gilbert & Chandler Heights	CHANDLER
15	Thu	Hwy 260 & Beeline Hwy	PAYSON
16	Fri	Main St. & Paper Mill	TAYLOR
21	Wed	River & La Cholla	TUCSON
22	Thu	75th Ave & Thunderbird	PEORIA
23	Fri	Hwy 260 & Finney Flat	CAMP VERDE
28	Wed	Woodlands Village	FLAGSTAFF
29	Thu	Palisades & La Montana	FOUNTAIN HILLS
30	Fri	99th Ave. & Beardsley	PEORIA

## August 2010 Schedule

4	Wed	RH Johnson & Meeker	SUN CITY WEST
5	Thu	Southern & McClintock	TEMPE
6	Fri	Sunrise & Kolb	TUCSON
11	Wed	7th St. & Missouri	PHOENIX
12	Thu	McDonald & Granite Reef	SCOTTSDALE
13	Fri	Coffee Pot & Yavapai	SEDONA
18	Wed	Brown & Ellsworth	MESA
19	Thu	Scottsdale & Grayhawk	SCOTTSDALE
20	Fri	Elliot & Higley	GILBERT
25	Wed	Maricopa & Oro Grande	LAKE HAVASU CITY
26	Thu	Gilbert & McKellips	MESA
27	Fri	Baseline & Crismon	MESA



Results will be faxed or mailed to you in 14 days.

Appointments Required. Please call (602) 944-9626